



**Penketh
High School**



PENKETH HIGH SCHOOL

Policy: Academy Child Protection Policy 2021-2022

Policy owned by	S Bewes
Date Approved by Local Governing Body	November 2021
Signature of Chair to Local Governing Body	L Muir
Signature of Academy Principal	J Carlin
Date of Next Review	August 2022

Part 1: The School Commitment to Child Protection

1. Introduction

At Penketh High School Safeguarding and promoting the welfare of children is everyone's responsibility. Everyone who comes into contact with children and their families and carers has a role to play in safeguarding children. In order to fulfil this responsibility effectively, all professionals should make sure their approach is child centred. This means that they should consider, at all times, what is in the best interests of the child.

This policy applies to all adults, including volunteers, working in or on behalf of the school.

This policy draws upon the following statutory legislation to keep all of our pupils safe:

- Warrington Safeguarding Children Procedures: <http://www.warringtonlscb.org/>
- Working Together to Safeguard Children (2018)
- DfE Guidance 'What to do if you are worried a child is being abused' (2015)
- Education Act 2002 (section 175) and Children's Act 1989 and 2005.
- Keeping Children Safe in Education (2021)

Penketh High School is committed to safeguarding and promoting the well-being of all of its pupils. Each pupil's welfare is of paramount importance. We recognise that some children may be especially vulnerable to abuse. We recognise that children who are abused or neglected may find it difficult to develop a sense of self-worth and or view the world in a positive way. Whilst at school, their behaviour may be challenging. We recognise that some children who have experienced abuse may harm others.

At Penketh High School we will always take a considered and sensitive approach in order that we can support all of our pupils in an effective and timely way.

2. Meet the Safeguarding Team at Penketh High School

Penketh High School operates a safeguarding team approach with a split focus on both early help and child protection.

The team meets every half term and discusses and takes action to safeguard the most vulnerable children in school. The team members are key support staff throughout school who works closely with all year groups to ensure they are safe both in and out of school.

The team is as follows:

- Mrs S Bewes (Designated Safeguarding Lead)
- Mrs C Lomax (Vice Principal and SLT DSL)
- Miss A Lewis (Deputy DSL)
- Mr N Smith (Assistant Principal, Climate for Learning)

3. Key Functions of the Safeguarding and Pastoral Team

The DSL will lead the Safeguarding Team and allocate tasks to team members via regular team meetings. The DSL will have management oversight of the safeguarding work completed by the team. Below is a list of some of the tasks that the DSL will undertake:

- Contribute to Combined Assessments, complete DASH risk assessments (in relation to Domestic Abuse), complete CSE screening tools.
- Make contact with Children's Social Care/ Multi Agency Safeguarding Hub (MASH) when there is an identified child protection issue.
- Make referrals to appropriate statutory and non-statutory services for support.
- Support to children and their families by taking the Lead Professional role.
- Attend and deliver Safeguarding Training (whole school training)
- Challenge practice and decisions in line with the WSP Escalation Policy
- Have a thorough understanding of the thresholds for support from Children's Social Care eg; Children in Need of protection and children in need of care
- Support each other (De Briefing opportunities and reflective learning opportunities)
- Champion and know who your vulnerable children are. The Safeguarding Risk Register should be reviewed at Welfare Team meetings on a regular basis.

4. The team approach to safeguarding children

This is considered to be the best practice to managing safeguarding at school level. Practically, there is always cover for absence and a number of professionals trained to know what to do if there were concerns about the safety or wellbeing of a child. It also encourages a culture of working collaboratively and making decisions together, with the child at the heart of the team's practice. The team approach is supportive to the DSL, who will as a result of a team structure, no longer works in isolation and take the sole responsibility for safeguarding.

Importantly, the DSL leads the safeguarding team and on a day to day basis decision will be made by the DSL. Team members need to be clear of their role within the team and what is expected from them. Debriefing and reflective practice is an important part of safeguarding practice and should be routinely built into safeguarding team meetings.

5. Penketh High School's Commitment

Everyone working in or for our school service shares an objective to help keep children and young people safe by contributing to:

- Safeguarding and promoting the welfare of children is defined for the purposes of this guidance as: protecting children from maltreatment; preventing impairment of children's health or development; ensuring that children grow up in circumstances consistent with the provision of safe and effective care; and taking action to enable all children to have the best outcomes. (Keeping Children Safe in Education 2021).
- Providing a safe environment for children and young people to learn and develop in our school setting. (Keeping Children Safe in Education 2021).
- Identifying children and young people who are suffering or likely to suffer significant harm, and taking appropriate action with the aim of making sure they are kept safe both at home

and in our school setting. All school and college staff should be prepared to identify children who may benefit from **early help**. (Keeping Children Safe in Education 2021)

6. Early Help

Early Help is an important aspect of Safeguarding and many children and families can be supported by the process. In particular consideration to the offer of Early Help should be given to:

- Pupils with health conditions
- Pupils with mental health conditions
- Pupils with a family member in prison who are affected by parental offending
- Pupils at risk of honour-based abuse (such as forced marriage or female genital mutilation)
- Pupils who are persistently absent from school including persistent absences for part of the school day.

Early help is intervening early and as soon as possible to tackle problems emerging for children, young people and their families, or with a population most at risk of developing problems providing the right help at the right time to support change and improved outcomes for children. It is about offering help to children and young people across the continuum of need from universal provision to services for children with low level problems to those families with complex needs up to services provided by social care.

Services can be “stepped up” to social care from Early Help or “stepped down” from social care to Early Help in order to provide seamless service provision to families based on an assessment of need. Early Help services should be provided as required in the early years of a child or young person’s life (including pre-natal interventions) and then at all ages and stages of a child’s life until they reach adulthood including throughout primary school years and teenage years.

Early Help allows for support to be put in place at the right time to meet families’ needs prior to issues reaching crisis point and to reinforce families’ own skills to determine their life course and therefore reducing poor outcomes and inequalities for children and young people. It also helps to break the cycle of families being dependent on services by empowering and enabling them to do things for themselves making them more resilient and independent. Finally, it has a positive effect on cost effectiveness. Early Help is not about specialist services for children, young people and their families. Specialist services are there to support families who are experiencing significant difficulties. These services are provided by social care for children who are at risk of harm.

Early Help is about stepping in to prevent difficulties becoming chronic and helping families overcome difficulties as early as possible. It is also about identifying harmful patterns of care as early as possible, such as those that may be contributing to neglectful patterns of care and intervening early.

For the purpose of this strategy the Children and Young People’s Partnership has decided that the following definition of Early Help will be used by all agencies delivering services across the borough: “Early Help is intervening early and as soon as possible to tackle problems emerging for children, young people and their families, or with a population most at risk of developing problems. Early help can be provided at any development or age milestone in a child or young person’s life.”

Part 2: Providing a Safe and Supportive Environment

1. Safer Recruitment and Selection

The school pays full regard to DFE guidance 'Safeguarding Children and Safer Recruitment in Education' January 2011. We ensure that all appropriate measures are applied in relation to everyone who works in the school who is likely to be perceived by the children as a safe and trustworthy adult including e.g. Governors, volunteers and staff employed by contractors.

Safer recruitment practice includes scrutinizing applicants, verifying identity, academic and vocational qualifications, obtaining professional references, checking previous employment history and ensuring that a candidate has the health and physical capacity for the job. It also includes undertaking interviews and checking the Children's List and Disclosure and Barring Service checks and right to work in England checks.

In line with statutory changes, underpinned by regulations, the following will apply:

A DBS Enhanced Disclosure is obtained for all new appointments to our school's workforce through staffing personnel and payroll, from October 2009 it was a criminal offence for employers to take on an individual in a regulated activity whom they know to have been barred and/or not refer to the appropriate agency details of anyone who is permanently removed from regulated activity or who leaves while under investigation for allegedly causing harm or posing a risk of harm.

This school is committed to keep an up to date single central record detailing a range of checks carried out on our staff. All new appointments to our school workforce who have lived outside the UK will be subject to additional checks as appropriate. Our school ensures that supply staff have undergone the necessary checks and will be made aware of this policy. Identity checks will be carried out on all appointments to our school workforce before the appointment is made.

Safer Recruitment Training has been completed by the following staff:

- Mr John Carlin (Principal)
- Mr Adam McMillan (Vice Principal - Curriculum and Progress)
- Mrs Claire Lomax (Vice Principal - Pupil Development and Support)
- Mr John Barlow (Assistant Principal - Teaching and Learning)
- Mr Ian Farrar (Assistant Principal - Whole School Outcomes)
- Mrs Jane Regan (Resources Manager)
- Mr Paul Cordingley (Exams and Data Manager) (Cover Manager)
- Mrs Fiona Agnew (Business Support Officer)
- Mrs Lacy Muir (Chair of Governors)
- Mrs Vicky Briggs (Governor)
- Mrs Moira Bryan (Governor)
- Mr Steve Pennington (Governor)

All these staff have undertaken the Hays Online Safer Recruitment Training. At least one of the above will be involved in all staff and volunteer appointments and arrangements (including, where appropriate, contracted services).

2. Safer Practice & Risk

Safe working practices in our school ensure that pupils are safe and that all staff:

- Are responsible for their own actions and behaviour and should avoid any conduct which would lead any reasonable person to question their motivation and intentions.
- All Staff work in an open and transparent way.
- Work with other colleagues where possible in situations open to question.
- Discuss and/or take advice from school management over any incident which may give rise to concern.
- Record any incidents or decisions made.
- Apply the same professional standards regardless of gender, sexuality or disability.
- Comply and are aware of the confidentiality policy.
- Are aware that breaches of the law and other professional guidelines could result in criminal or disciplinary action being taken against them.

3. Risk assessments

Risk assessments are taken seriously and used to good effect to promote safety. Risk assessments are available for all aspects of the school's work, such as premises and equipment, on-site activities, off-site activities, venues used and transport arrangements where relevant.

Risk assessments are carried out for individual pupils who are deemed to be our most vulnerable, and supported by action plans identifying how potential risks would be managed. These are monitored and reviewed by the DSL and risk is eliminated and reduced where possible. Parents and carers are an important part of this process and are consulted throughout this vital process so their child is kept safe in school to the best of our ability.

The online 'Evolve' system (www.warringtonvisits.org.uk) is used for school trips to ensure that all activities that take place outside of school are risk assessed and managed appropriately so that children are kept safe.

4. Safeguarding Information for pupils

All pupils in our school are aware of a number of staff who they can talk to. The school is committed to ensuring that pupils are aware of behaviour towards them that is not acceptable and how they can keep themselves safe. All pupils know that we have a designated safeguarding lead (DSL), Deputy Designated Safeguarding Lead (DDSL) and Senior Safeguarding Lead (SSL) (who is a senior member of staff with responsibility for child protection) and know who this is. We inform pupils of whom they might talk to, both in and out of school, their right to be listened to and heard and what steps can be taken to protect them from harm. Our school will ensure that pupils are made aware that information can be found at the following: e.g. NSPCC, CEOP and other helplines. There is a strong pupil and parent support section on the school safeguarding section of the website.

5. The importance of our pupil voice

Pupils in our school are treated with dignity and respect and their views are listened to. Safeguarding is a priority which is reflected in the curriculum, which is used to promote safeguarding and is tailored to local concerns. Posters and displays also ensure that Safeguarding has a high profile within the whole school community.

Children in our school are consulted about how they want to be kept safe in school and we listen to their ideas and instil our expertise on them around key safeguarding issues through assemblies and learning for life.

6. Partnership with Parents

The school shares a purpose with parents to educate and keep children safe from harm. We are committed to working with parents positively, openly and honestly. We ensure that all parents are treated with respect, dignity and courtesy. We respect parents' rights to privacy and confidentiality and will not share sensitive information unless we have permission, or it is necessary to do so in order to protect a child. School will share with parents any concerns we may have about their child unless to do so may place a child at risk of harm.

We encourage parents to discuss any concerns they may have with their son or daughter's Form Tutor, Year Lead or any other appropriate member of staff.

7. Partnerships with others

Our school recognizes that it is essential to establish positive and effective working relationships with other agencies who are partners in the Warrington Safeguarding Partnership. There is a joint responsibility for all these agencies to share information to ensure the safeguarding of all children.

Penketh High School works closely with all statutory and non-statutory agencies to ensure our pupils keep safe both in and out of school.

8. School Training and Staff Induction

All staff will receive basic training as part of their induction; this will be delivered by the DSL. New staff will be provided with the safeguarding suite of documents, including the Safeguarding Policy as part of their induction and will be expected to read at least Part 1 of 'Keeping Children Safe in Education 2021'. All staff should ensure that they are familiar with the procedures written within this Policy. All staff can gain advice and support from the DSL who is the lead member of staff for safeguarding.

The DSL, DDSL and SSL must update their training on a regular basis. The statutory requirement is every two years, however, good practice is that the Safeguarding Team attends multi-agency training on an annual basis and participates in local (single agency) networks to share good practice, reflect and learn together and to keep up to date. The DSL/SSL must attend PREVENT training.

The named governor for safeguarding should also update their training on a regular basis; good practice is on an annual basis to ensure that they keep up to date in their knowledge.

Evidence of safeguarding training must be made available as part of any safeguarding inspection or audit.

9. Related School Policies

Safeguarding covers more than the contribution made to child protection in relation to individual children. It also encompasses issues such as pupil health and safety and bullying and a range of other issues, for example, arrangements for meeting the medical needs of children providing first aid, school security, drugs and substance misuse, positive behaviour etc. There may also be other safeguarding issues that are specific to the local area or population.

The following school policies and/or documents that inform all of our work around safeguarding and child protection in school.

Government policies

- Keeping Children safe in Education (2021)
- Working Together to safeguard children (2018)
- What to do if you're worried a child is being abused (2015)
- Improving information in identifying missing children (2016)
- Mental Health and Behaviour in schools (2015)
- DFE and ACPO drug advice for schools (2012)
- Sexual violence and harassment between children in schools and colleges (2017)
- Safeguarding Code of Practice
- PREVENT Duty (2015)
- Teacher misconduct: The prohibition of Teachers (2015)
- Multi agency statutory guidance on Female Genital mutilation (2016)
- Safeguarding children who may have been trafficked: Practice guidance (2011)
- Child sexual exploitation: Definition and a guide for practitioners, local leaders and decision makers working to protect children from child sexual exploitation (2017)
- County Lines – The criminal exploitation of children and vulnerable adults (2018)

School Policies

- Academy Health and Safety Policy.
- Anti-bullying Policy
- Attendance Policy
- Climate for Learning Policy
- E-safety policy
- Special Educational Needs and Difficulties Policy and Information.
- TCAT Complaints Policy
- TCAT Health and Safety Policy.
- TCAT Recruitment and Selection Policy
- TCAT Safeguarding Policy.
- TCAT Staff Code of Conduct Policy
- TCAT Whistleblowing Policy.

10. Children Missing from Education (CME)

The school responds quickly if a child goes missing from school site or fails to attend school. Where children on roll at our school do not arrive and attend, and the school has made the usual enquiries, we will refer the case to WBC Attendance Officers, Pupil Support Team and Children's Social Services/ Police if there are serious concerns.

Children identified as missing from education will be referred to Pupils out of School Meeting (POOSM).

Our Local Authority Lead for Attendance is **Debbie Parlane** and CME is **Dave Sampson** Tel: 01925 442261.

The school also works closely with "We are with you" who are the commissioned service in Warrington for children who go missing from home.

11. Confidentiality processes

Penketh High School has regard to "Information Sharing: Practitioner's guide" HM Government, (2015).

"Where there is a concern that the child may be suffering or is at risk of suffering significant harm, the child's safety and welfare must be the overriding consideration. "

This guidance indicates:

- When information must be shared with police and Children's Services where the child/ young person is / may be at risk of significant harm
- When the pupil's and/or parent's confidentiality must not be breached
- Information is shared on a need to know basis.

12. Pupil information and data protection

Our school will endeavour to keep up to date and accurate information in order to keep children safe and provide appropriate care for them. The school requires accurate and up to date information regarding:

- Names and contact details of persons with whom the child normally lives.
- Names and contact details of all persons with parental responsibility (if different from above).
- Emergency contact details (if different from above).
- Details of any persons authorized to collect the child from school (if different from above).
- Any relevant court orders in place including those which affect any person's access to the child (e.g. Residence Order, Contact Order, Care Order, Injunctions etc.).
- If the child is or has been subject to a Child Protection Plan.
- Name and contact details of GP.
- Any other factors which may impact on the safety and welfare of the child.
- The school will collate, store and agree access to this information, ensuring all information held electronically is stored securely with due regard to meeting data protection and safeguarding requirements.

13. Roles and Responsibilities

Our Governing Body will ensure that:

- The school has safeguarding procedures in place that are in accordance with Local Authority guidance and locally agreed inter-agency procedures, and the policy are made available to parents on request in a number of formats.
- The school operates safer recruitment procedures and makes sure that all appropriate checks are carried out on staff, governors and volunteers who work with children; and that any panel involved in the recruitment of staff has at least one member who has undertaken the Safer Recruitment Training. They will also consider any gap in employment and any previous conduct.
- The school has procedures for dealing with allegations against staff, governors and volunteers that comply with guidance from the local authority and locally agreed inter-agency procedures.
- E-safety policy and procedures are in place and training and support is provided for staff and pupils to ensure that there is a good understanding of child protection issues related to electronic media.
- A senior member of the school's leadership team is designated to take lead responsibility for child protection issues, providing advice and support to other staff, liaising with the local authority and working with other agencies.
- Staff, including the Principal, undertakes appropriate child protection training which is updated every two years.
- They remedy, without delay, any deficiencies or weaknesses regarding child protection arrangements.
- A governor is nominated to be responsible for liaising with the Warrington Safeguarding Partnership and /or partner agencies in the event of allegations of abuse being made against the Principal.
- Where services or activities are provided on the school premises by another body, the body concerned has appropriate policies and procedures in place in regard to safeguarding children and child protection and liaises with the school on these matters where appropriate.
- They review their policies and procedures annually and provide information to the WSP as appropriate about how the above duties have been discharged.

The Principal will ensure that:

- The policies and procedures adopted by the Governing Body are fully implemented, and followed by all staff.
- Sufficient resources and time are allocated to enable the designated person and other staff to discharge their responsibilities including taking part in strategy discussions and other inter-agency meetings and contributing to the assessments of children.
- All staff, governors and volunteers feel able to raise concerns about poor or unsafe practice in regard to children, and such concerns are addressed sensitively and effectively in a timely manner in accordance with agreed whistle blowing policies.

The Designated Safeguarding Lead responsible for child protection will ensure the following:

- Lead responsibility for dealing with safeguarding and child protection concerns at the school and should be available at all times during the school day. This may mean having a deputy or team approach.
- Should act as source of support, advice and expertise within school when deciding whether to make a referral by liaising with relevant agencies.

- The DSL will be trained to a high level, which includes both single agency and multi-agency training (Level 3). This must be updated at least every two years; good practice is that the DSL updates their training on an annual basis.
- The DSL will recognise how to identify signs of abuse and will make an appropriate judgement on what action to take. This will be based on the information that the DSL is presented with by staff.
- The DSL will assess the appropriateness of completing an early help assessment or whether the threshold has been met for social care statutory social work services.
- The DSL will access regular training and network events to keep as up to date as possible with changes in legislation and or statutory guidance.
- The DSL will ensure that the schools safeguarding policy is embedded and available to all staff and volunteers at the point of induction. If the policy is reviewed the DSL will share the new updates with all staff to ensure that all staff knows what is expected of them.
- The DSL will champion safeguarding and keep all staff up to date with current procedure and practice. This will help to familiarise all staff with their own role within safeguarding.
- The DSL will ensure all new staff and volunteers have induction training covering safeguarding and child protection and are able to recognise and report any concerns immediately if they arise. The induction will cover the 'basic awareness session' and the 'no delay' principle.
- The DSL will keep detailed accurate secure written contemporaneous records. Each child will have an individual electronic file via CPOMS. Chronologies will be held for each child using the CPOMS system and they will be clear, concise and factual (E.g. dated, concern, initialled, action taken). Files will hold copies of all referrals and relevant multi-agency meetings and plans. Files will be reviewed and quality assured as part of the s157/s175 audit process.
- The DSL will deliver whole school staff safeguarding training to all staff; recommended on a yearly basis as part of INSET. This should include briefings on specific topics such as CSE, FGM, County lines, E Safety, Equality, Radicalisation and Private Fostering.
- The DSL should be aware of the Warrington Safeguarding Partnership and how it operates. This should include access to the WSP website and to practitioner training events.
- The DSL will participate in multi-agency meetings and contribute effectively either verbally or by way of a written report.
- The DSL will attend Child Protection Case Conferences and contribute to discussions at the conference and will make a formal recommendation at the meeting in respect of a child protection plan.
- The DSL will contribute to social work assessments e.g. The Combined Assessment when required and requested to do so. This will include the sharing of information about attendance, attainment and any other concerns that have been identified as well of any strengths that the family/ child has.
- The DSL will develop the Safeguarding Risk Register (SRR) to identify the vulnerable children at the school. This confidential register will be reviewed regularly to ensure that the DSL knows who the vulnerable children are.
- This may be reviewed as part of safeguarding team meetings. This should automatically include children in care, children on a child protection plan and children in need. It may also include children receiving early help (family support plan), young carers, children with medical needs, children at risk of CSE, children who have emotional and mental health difficulties, children who self-harm etc. The categories on this register will be determined by the needs of the school community.
- The DSL will monitor the attendance, development and wellbeing of children who are subject to a child protection plan and children in care.
- The DSL will champion safeguarding in school- promoting effective communication both internally and with external agencies on all matters relating to child protection.

- The DSL will complete an s157/ s175 Audit on an annual basis, at the request of the Local Authority to ensure that there are effective systems in place to keep children safe.
- Where appropriate the DSL will identify staff to be part of a Safeguarding Team, to ensure that there is always a member of staff present in school who can take a lead role safeguarding children in the DSLs absence. The DSL will take the lead responsibility within the safeguarding team.

All staff and volunteers will:

- Inform the Designated Safeguarding Lead (DSL) or another member of the Safeguarding Team of any concerns without delay.
- Comply fully with the school's policies and procedures around safeguarding
- Be fully aware of expected staff conduct and expectations
- Attend appropriate training annually and at designated inset days.
- All staff will read and understand part 1 and Annex A of the Department for Education's statutory safeguarding guidance, Keeping Children Safe in Education, and review this guidance at least annually.
- Our systems which support safeguarding, including this child protection and safeguarding policy, the role and identity of the designated safeguarding lead's (DSL), the behaviour policy, and the safeguarding response to children who go missing from education
- The early help process and their role in it, including identifying emerging problems, liaising with the DSL and or Pastoral Staff and sharing information with other professionals to support early identification and assessment
- The process for making referrals to local authority children's social care and for statutory assessments that may follow a referral, including the role they might be expected to play
- What to do if they identify a safeguarding issue or a child tells them they are being abused or neglected, including specific issues such as FGM, and how to maintain an appropriate level of confidentiality while liaising with relevant professionals
- The signs of different types of abuse and neglect, as well as specific safeguarding issues, such as child sexual exploitation (CSE), Child Criminal Exploitation (CCE) indicators of being at risk from or involved with serious violent crime, FGM and radicalisation
- Abuse can happen to children on and offline line with equal significance for the child.
- Abuse on line may include:
 - Sending abusive, harassing or misogynistic comments
 - Non-consensual sharing of indecent mages
 - Sharing abusive images and pornography to those who don't want to receive such images.

14. Safeguarding Training

All staff will receive basic training as part of their induction; this will be delivered by the DSL. New staff will be provided with the safeguarding suite of documents, including the Safeguarding Policy as part of their induction and will be expected to read at least Part 1 of Keeping Children Safe in Education 2021. All staff should ensure that they are familiar with the procedures written within this Policy. All staff can gain advice and support from the DSL who is the lead member of staff for safeguarding.

The DSL must update their training on a regular basis. The statutory requirement is every two years, however, good practice is that the DSL attends multi-agency training on an annual basis and participates in local (single agency) networks to share good practice, reflect and learn together and to keep up to date. The DSL must attend PREVENT, CSE and county lines training.

There is a whole approach to safeguarding pupils and all staff are trained regularly including all support staff, maintenance staff and lunch time assistants. This includes all new starters, newly qualified teachers and volunteers.

The named governor for safeguarding should also update their training on a regular basis; good practice is on an annual basis to ensure that they keep up to date in their knowledge.

Evidence of safeguarding training must be made available as part of any safeguarding inspection or audit.

Part 3: Identifying Children Who Are Suffering or Likely to Suffer Significant Harm

Teachers and other adults in school are well placed to observe any physical, emotional or behavioural signs which indicate that a child may be suffering significant harm. The relationships between staff, pupils, parents and the public which foster respect, confidence and trust can lead to disclosures of abuse, and/or school staff being alerted to concerns.

Definitions of Abuse

A child

As in the Children Act of 1989 and 2004, a child is anyone who has not yet reached his/her 18th birthday or in the case of disabled children 25 years.

Harm

Means ill-treatment or impairment of health and development, including, for example, impairment suffered from seeing or hearing the ill-treatment of another.

Development

Means physical, intellectual, emotional, social or behavioural development.

Health

Includes physical and mental health; maltreatment includes sexual abuse and other forms of ill-treatment which are not physical.

Abuse and Neglect

Are forms of maltreatment. Somebody may abuse or neglect a child by inflicting harm or failing to act to prevent harm. Children may be abused in a family or in an institutional or community setting; by those known to them, or, more rarely, by a stranger. They may be abused by an adult or adults or another child or children.

Physical Abuse

May involve hitting, shaking, throwing, poisoning, burning or scalding, drowning, suffocating or otherwise causing physical harm to a child. Physical harm may also be caused when a parent or carer fabricates the symptoms of or deliberately induces illness in a child.

Sexual Abuse

Sexual abuse involves forcing or enticing a child or young person to take part in sexual activities, not necessarily involving a high level of violence, whether or not the child is aware of what is happening. The activities may involve physical contact, including assault by penetration (for example, rape or oral sex) or non-penetrative acts such as masturbation, kissing, rubbing and touching outside of clothing. They may also include non-contact activities, such as involving children in looking at, or in the production of, sexual images, watching sexual activities, encouraging children to behave in sexually inappropriate ways, or grooming a child in preparation for abuse (including via the internet and mobile phones). Sexual abuse is not solely perpetrated by adult males. Women can also commit acts of sexual abuse, as can other children.

Emotional Abuse

Emotional abuse is the persistent emotional maltreatment of a child such as to cause severe and persistent adverse effects on the child's emotional development. It may involve conveying to children that they are worthless or unloved, inadequate, or valued only insofar as they meet the needs of another person. It may include not giving the child opportunities to express their views, deliberately silencing them or 'making fun' of what they say or how they communicate. It may feature age or

developmentally inappropriate expectations being imposed on children. These may include interactions that are beyond the child's developmental capability, as well as overprotection and limitation of exploration and learning, or preventing the child participating in normal social interaction. It may involve seeing or hearing the ill-treatment of another. It may involve serious bullying (including cyber bullying via the internet or mobile phones), causing children frequently to feel frightened or in danger, or the exploitation or corruption of children. Some level of emotional abuse is involved in all types of maltreatment of a child, though it may occur alone.

Neglect

is the persistent failure to meet a child's basic physical and/or psychological needs, likely to result in the serious impairment of the child's health or development. Neglect may occur during pregnancy as a result of maternal substance abuse. Once a child is born, neglect may involve a parent or carer failing to:

- provide adequate food and clothing, shelter (including exclusion from home or abandonment)
- protect a child from physical and emotional harm or danger
- ensure adequate supervision (including the use of inadequate caretakers)
- ensure access to appropriate medical care or treatment.

It may also include neglect of, or unresponsiveness to, a child's basic emotional needs. (Working Together to Safeguard Children, 2018)

Part 4: Child Protection Procedures / Taking Action to Ensure Children Are Safe at School and at Home

1. Introduction

Staff need to be aware that safeguarding is everyone's responsibility and that they can refer to social care through a MARS at any point. It would be highly recommended that they tell their DSL about this and ask for advice.

This can be done through the multi-Agency Safeguarding Hub (MASH) team on 01925 443400 and sent to childreferral@warrington.gov.uk

Staff will be supported by the school and their professional associations. The designated lead for Safeguarding/child protection officer will be supported by other senior colleagues and the Warrington Education Safeguarding Team.

It is imperative that staff are aware that when the DSL (Sarah Bewes) is out or unavailable, they need to pass on any concerns over to Angela Lewis (DDSL) Claire Lomax (SSL / DSL Trained and Vice Principal) Kelly Smith (Lead Teacher SEMH) or Niall Smith (Assistant Principal, Climate for Learning).

In the extreme case that all DSLs are out then any concerns can be passed to the Principal John Carlin and/or the wider pastoral team who have safeguarding training. These staff can deal with any safeguarding issues and will call the MASH team and complete a MARS social care form where necessary.

Safeguarding is also an agenda item for which meetings and therefore there is an opportunity for discussion and to raise concerns on a regular basis.

All staff follows the Warrington Safeguarding Children Procedures which are consistent with 'Working Together to Safeguard Children' (2021) and 'What to do if you are worried a child is being abused (2015).

It is **not** the responsibility of the school staff to investigate welfare concerns or determine the truth of any disclosure or allegation. All members of staff however, have a duty to recognize concerns and maintain an open mind. Accordingly, all concerns regarding the welfare of pupils will be recorded and discussed with the Designated Safeguarding Lead with responsibility for child protection (or the team members listed above in the absence of the designated lead) prior to any discussion with parents.

2. Dealing with disclosures from children

Any staff that have concerns around a child or if a child discloses to them should follow the following procedures:

- In a case of a disclosure of a serious safeguarding concern staff should contact the DSL immediately on their extension number or through the Senior Leadership team communication system network, they should then record this concern onto CPOMS.
- If staff have a safeguarding concern around a pupil, they need to speak to a member of the Safeguarding Team if it is urgent and then record onto CPOMS once they have physically spoken to a member of the Safeguarding Team. If it is a general welfare concern staff need to

deal with this and support the pupil appropriately. Staff should then record these actions on to CPOMS. All staff have received training on how to do this.

Key members of the safeguarding team and SLT are notified via email when an incident is logged on CPOMS. Staff raising a concern will, in most cases, get a response to any raised concern to inform you of any actions we have taken creating transparency and accountability.

3. Concerns that staff must immediately report

Staff must immediately report if they have the following concerns:

- Any suspicion that a child is injured, marked, or bruised in a way which is not readily attributable to the normal knocks or scrapes received in play
- Any explanation given which appears inconsistent or suspicious
- Any behaviour which give rise to suspicions that a child may have suffered harm (e.g. worrying drawings or play)
- Any concerns that a child may be suffering from inadequate care, ill treatment, or emotional maltreatment
- Any concerns that a child is presenting signs or symptoms of abuse or neglect
- Any significant changes in a child's presentation, including non-attendance
- Any hint or disclosure of abuse from any person
- Any concerns regarding person(s) who may pose a risk to children (e.g. living in a household with children present)

The DSL and Safeguarding Team train staff to report issues as soon as they arise so that concerns are addressed as soon as possible and shared with the appropriate agencies.

4. Responding to Disclosure

Disclosures or information may be received from pupils, parents or other members of the public. School recognizes that those who disclose such information may do so with difficulty, having chosen carefully to whom they will speak. Accordingly, all staff will handle disclosures with sensitivity. Such information cannot remain confidential and staff will immediately communicate what they have been told to the Designated Safeguarding Lead and make a contemporaneous record.

Principles of taking a disclosure from a pupil:

Staff will not investigate but will, wherever possible, elicit enough information to pass on to the DSL in order that s/he can make an informed decision of what to do next.

Staff at Penketh High School will:

- Listen to and **take seriously** any disclosure or information that a child may be at risk of harm.
- Try to ensure that the person disclosing does not have to speak to another member of school staff
- Clarify the information.
- Try to keep questions to a minimum and of an 'open' nature e.g. 'Can you tell me what happened?' rather than 'Did x hit you?'
- Try not to show signs of shock, horror or surprise.
- Not express feelings or judgements regarding any person alleged to have harmed the child.

- Explain sensitively to the person that they have a responsibility to refer the information to the designated senior person.
- Reassure and support the person as far as possible.
- Explain that only those who 'need to know' will be told.
- Explain what will happen next and that the person will be involved as appropriate.

5. Action by the Designated Safeguarding Lead (or other member of the Safeguarding Team in their absence)

Following any information raising concern, the designated senior person will consider:

- Any urgent medical needs of the child.
- Whether the child is subject to a child protection plan.
- Discussing the matter with other agencies involved with the family.
- Consulting with appropriate persons e.g. Social Care Direct or MASH colleagues.
- The child's wishes and what they want.

Then decide:

- To talk to parents, unless to do so may place a child at risk of significant harm, impede any police investigation and/or place the member of staff or others at risk.
- Whether to make a child protection referral to Children's Services because a child is suffering or is likely to suffer significant harm and if this needs to be undertaken immediately.

Or:

- Not to make a referral at this stage.
- If further monitoring is necessary.
- If it would be appropriate to undertake an assessment (e.g. Early Help) and/or make a referral for other services.

All information and actions taken, including the reasons for any decisions made, will be fully documented. All referrals to Children's Services will be followed up in writing within 24 hours using either the MARS referral form or an email or telephone call

6. Action following a child protection referral

The DSL or other appropriate member of staff will:

- Make regular contact with the social worker involved to stay informed.
- Wherever possible, contribute to the strategy discussion.
- Provide a report for, attend and contribute to any subsequent child protection conference.
- If the child or children are made the subject of a child protection plan, contribute to the child protection plan and attend core group meetings and review conferences.
- Where possible, share all reports with parents prior to meetings.
- Where in disagreement with a decision made by Children's Services e.g. not to apply child protection procedures or not to convene a child protection conference, follow the guidance in the Warrington Safeguarding Children Procedures.
- Where a child subject to a child protection plan moves from the school or goes missing immediately inform Children's Services.

7. Recording and Monitoring

Accurate records will be made as soon as practicable and will clearly distinguish between observation, fact, opinion and hypothesis.

All paper documents will be retained in a 'Child Protection file', separate from the child's school file. This will be locked away and only accessible to the Principal, Vice Principal and DSL.

These records will be copied and transferred to any school or setting the child moves to, clearly marked 'Child Protection, Confidential, for attention of Designated Senior Person for Child Protection.'

If the child goes missing from education or is removed from roll to be educated at home and any child protection file should be copied and the copy sent to the Pupil Support Team at WBC. Original copies will be retained until the child's 31st birthday.

CPOMS allows the DSL and Safeguarding Team to store documents securely and electronically so there is a move away from paper files where possible.

8. Supporting the child and partnership with parents and Carers

- School recognizes that the child's welfare is paramount, however good child protection practice and outcome relies on a positive, open and honest working partnership with parents and carers
- Whilst we may, on occasion, need to make referrals without consultation with parents, we will make every effort to maintain a positive working relationship with them whilst fulfilling our duties to protect any child
- We will provide a secure, caring, supportive and protective relationship for the child
- Children will be given a proper explanation (appropriate to age and understanding) of what action is being taken on their behalf and why.
- We will endeavour always to preserve the privacy, dignity and right to confidentiality of the child and parents. The DSL will determine which members of staff "need to know" personal information and what they "need to know" for the purpose of supporting and protecting the child.

9. Parenting Capacity: When there are concerns

Research and experience indicates that the following responses from parents may suggest a cause for concern across all four categories:

- Delay in seeking treatment that is obviously needed;
- Unawareness or denial of any injury, pain or loss of function (for example, a fractured limb);
- Inconsistent explanations offered, several different explanations or the child is said to have acted in a way that is inappropriate to her/his age and development;
- Reluctance to give information or failure to mention other known relevant injuries;
- Frequent presentation of minor injuries;
- A persistently negative attitude towards the child;
- Unrealistic expectations or constant complaints about the child;
- Alcohol misuse or other drug/substance misuse;

- Parents request removal of the child from home; or
- Mental health issues which prevent the parent from meeting the child's basic needs
- Violence between adults in the household.
- Failure to protect the child from known 'risky' persons
- Failure to prioritise the child's needs above that of their own.

10. Mental Health

All staff should also be aware that mental health problems can, in some cases, be an indicator that a child has suffered or is at risk of suffering abuse, neglect or exploitation.

Only appropriately trained professionals should attempt to make a diagnosis of a mental health problem. Staff however, are well placed to observe children day-to-day and identify those whose behaviour suggests that they may be experiencing a mental health problem or be at risk of developing one.

Where children have suffered abuse and neglect, or other potentially traumatic adverse childhood experiences, this can have a lasting impact throughout childhood, adolescence and into adulthood. It is key that staff are aware of how these children's experiences, can impact on their mental health, behaviour and education.

If staff have a mental health concern about a child that is also a safeguarding concern, immediate action should be taken, following this safeguarding policy and speaking to the Designated Safeguarding Lead or another member of the Safeguarding Team.

The DSL will work closely with senior mental health leads both within school (Kelly Smith) and within the community (CYPMHS).

Part 5: Extra-Familial Harm.

1. Contextual Safeguarding

'Contextual Safeguarding' is an approach to understanding and responding to young people's experiences of significant harm beyond their families. It recognises that the different relationships that young people form in their communities, schools and online can feature violence and abuse. Parents and carers may have very little influence over these contexts and young people's experiences of extra familial abuse can undermine parent-child relationships. At Bridgewater we recognise this and in the assessment of and intervention with pupils and this forms a critical part of our safeguarding practices.

2. Private Fostering

Private fostering is concerned with situations in which individuals are caring for children and young people by private arrangement and the young people are not in the care of the local authority.

- School will identify on the in-year admission form if the person filling in the form does not have parental responsibility.
- School will notify directly the Children's Social Care Duty Team of any arrangements that indicate a child or young person is being privately fostered.

3. Prevent, radicalisation and extremism

The Local Prevent Officer is **Andrew McIntyre** (Prevent Coordinator) and can be contacted on **01606 365986**, E-mail: Andrew.McIntyre@cheshire.pnn.police.uk

Penketh High School, like all other schools, is required to identify a Prevent Single Point of Contact (SPOC) who will be the lead within the organisation for safeguarding in relation to protecting individuals from radicalisation and involvement in terrorism: this will normally be the Designated Safeguarding Lead (DSL).

The Single Point of Contact (SPOC) for Penketh High School is **Sarah Bewes** and can be contacted on **01925 722298**

Email: SBewes@penkethhigh.org

Channel is a multi-agency approach to provide support to individuals who are at risk of being drawn into terrorist related activity. The channel contact for Cheshire Police is **Andrew McIntyre**, who can be contacted on **01606 365986**, E-mail: Andrew.McIntyre@cheshire.pnn.police.uk

Children are vulnerable to extremist ideology and radicalisation. Similar to protecting children from other forms of harms and abuse, protecting children from this risk should be a part of a schools' or colleges' safeguarding approach. (Keeping Children Safe in Education 2021).

Useful Definitions Around Radicalisation

Radicalisation refers to the process by which a person comes to support terrorism and or extremism leading to terrorism.

Terrorism is an action that endangers or causes serious violence to a person/people; causes serious damage to property; or seriously interferes or disrupts an electronic system. The use or threat must be designed to influence the government or to intimidate the public and is made for the purpose of advancing a political, religious or ideological cause. (Keeping Children Safe in Education 2021).

Extremism is defined by the Government in the Prevent Duty (2015) as ‘Vocal or active opposition to fundamental British values, including democracy, the rule of law, individual liberty and mutual respect and tolerance of different faiths and beliefs’

We also include in our definition of extremism calls for the death of members of our armed forces, whether in this country or overseas.

Extremism is defined by the Crown Prosecution Service as the demonstration of unacceptable behaviour by using any means or medium to express views which:

- Encourage, justify or glorify terrorist violence in furtherance of particular beliefs;
- Seek to provoke others to terrorist acts;
- Encourage other serious criminal activity or seek to provoke others to serious criminal acts; or
- Foster hatred which might lead to inter-community violence in the UK.

There is no such thing as a “typical extremist” those who become involved in extremist actions come from a range of backgrounds and experiences, and most individuals, even those who hold radical views, do not become involved in violent extremist activity.

Pupils may become susceptible to radicalisation through a range of social, personal and environmental factors - it is known that violent extremists exploit vulnerabilities in individuals to drive a wedge between them and their families and communities. It is vital that school staff are able to recognise those vulnerabilities.

Indicators of Vulnerability Include:

- Identity Crisis – the pupil is distanced from their cultural / religious heritage and experiences discomfort about their place in society;
- Personal Crisis – the pupil may be experiencing family tensions; a sense of isolation; and low self-esteem; they may have dissociated from their existing friendship group and become involved with a new and different group of friends; they may be searching for answers to questions about identity, faith and belonging;
- Personal Circumstances – migration; local community tensions; and events affecting the pupil’s country or region of origin may contribute to a sense of grievance that is triggered by personal experience of racism or discrimination or aspects of Government policy;
- Unmet Aspirations – the pupil may have perceptions of injustice; a feeling of failure; rejection of civic life;
- Experiences of Criminality – which may include involvement with criminal groups, imprisonment, and poor resettlement / reintegration;
- Special Educational Need – the pupil may experience difficulties with social interaction, empathy with others, understanding the consequences of their actions and awareness of the motivations of others.

However, this list is not exhaustive, nor does it mean that all young people experiencing the above are at risk of radicalisation for the purposes of violent extremism.

More Critical Risk Factors Could Include

- Being in contact with extremist recruiters;
- Accessing violent extremist websites, especially those with a social networking element;
- Possessing or accessing violent extremist literature;
- Using extremist narratives and a global ideology to explain personal disadvantage;
- Justifying the use of violence to solve societal issues;
- Joining or seeking to join extremist organisations; and
- Significant changes to appearance and / or behaviour;
- Experiencing a high level of social isolation resulting in issues of identity crisis and / or personal crisis.

What action should be taken if there are concerns?

Pass concerns to the DSL or another member of the safeguarding team as explained above, in school (verbally) and complete a CPOMS entry after this. The DSL/SPOC will make contact with the PREVENT Officer and will complete a PREVENT referral form as appropriate.

So-called ‘honour-based’ abuse (HBA) encompasses incidents or crimes which have been committed to protect or defend the honour of the family and/or the community, including female genital mutilation (FGM), forced marriage, and practices such as breast ironing. (KCISE 2021)

4. Forced Marriages

Forced Marriage may be defined as one conducted without the valid consent of both people, where pressure or abuse is used.

Indicators of vulnerability for pupils who may be at risk of Forced Marriage might include:

- Decline in attendance record or Persistent Absence from school.
- Request for extended leave of absence and failure to return from country of origin.
- Fear about forthcoming school holidays.
- Decline in behaviour, engagement, performance and punctuality.
- Withdrawn from school by a person with parental responsibility.
- Not allowed to attend extra-curricular activities.
- Sudden announcement of engagement to a stranger.
- Prevented from going on to Further/Higher Education.

When parents/carers make requests for extended holiday leave the school will request that the parents/carers provide the following information:

- Precise location of where the pupil is going.
- The purpose of the visit – is this corroborated by what the child says?
- The child/children know the purpose of the visit.
- The return date: is it a firm or an estimated date.

The school will notify the Local Authority Attendance Manager Debbie Parlane / Dave Sampson (CME Lead LA) if the pupil does not return on the given date.

The school will explain the authorising process and penalties for non-authorised absence to parents and carers in writing when considering the request. Parents will be made aware of the disadvantages to their child of missing school or missing examinations.

5. Female Genital Mutilation

Female genital mutilation (FGM) comprises all procedures that involve partial or total removal of the external female genitalia, or other injury to the female genital organs for non-medical reasons

Indicators of Vulnerability Include:

- Anxiety leading up to holidays.
- Talk of a special ceremony.
- Extended absence from school
- Physical signs of discomfort or bladder problems.

The school will treat this as a serious Child Protection issue and will comply with their legal duty to safeguard and promote welfare of pupils.

If FGM is reported, then the DSL will support the staff member to whom the FGM was disclosed in making a report directly to the Police.

The school will also implement its usual safeguarding policies and procedures.

The school will contact local Children's Services and inform the Duty and Assessment Team at the Local Authority.

Further information: Honour-based Abuse (including Female Genital Mutilation and Forced Marriage)

Female Genital Mutilation and Forced Marriage have been added into the title header to make it clearer what honour based violence includes. "Abuse committed in the context of preserving "honour" often involves a wider network of family or community pressure and can include multiple perpetrators. It is important to be aware of this dynamic and additional risk factors when deciding what form of safeguarding action to take" (DfE, 2019a) Further information in KCSIE 2021.

6. Child sexual exploitation (CSE)

The welfare and safety of all pupils at Penketh High School will be given our highest priority. Sexual exploitation of children and young people has been identified throughout the UK. This is a recognised form of Child Abuse. It affects boys and young men as well as girls and young women. It is a form of sexual abuse and can have a serious impact on every aspect of the lives of children involved.

The term Sexual exploitation has become increasingly recognisable. Practitioners are becoming more aware of how to identify the signs to indicate grooming and other methods of sexual exploitation. Children involved in any form of sexual exploitation should be treated primarily as victims of abuse and their needs carefully assessed. The aim should be to protect them from further harm.

Definitions

The sexual exploitation of children is defined as: involving 'exploitative situations, contexts and relationships where young people (or a third person or Person's) receive 'something' (e.g. food, accommodation, drugs, alcohol, cigarettes, affection, gifts, money) as a result of them engaging in sexual activities.'

It can be further explained by: Child sexual exploitation can occur through the use of technology without the child's immediate recognition; for example, being persuaded to post sexual images on the Internet/mobile phones without immediate payment or gain. In all cases, those exploiting the child/young person have power over them by virtue of the fact that they have gained their trust. Their age, gender, intellect, physical strength and/or economic or other resources allow that trust to be abused. Violence, coercion and intimidation are often involved in exploitative relationships. Such relationships are characterised in the main by the child or young person's limited availability of choice resulting from their social/economic and/or emotional vulnerability (Office of Children's Commissioner's Inquiry into Child sexual exploitation in Gangs and Groups, November 2012).

CSE Roles and Responsibilities

The Principal will ensure that resources, training, support and time is afforded to the Designated Safeguarding Lead to undertake their whole school responsibility for CSE

The Designated Safeguarding Lead will ensure that an effective curriculum structure is in place to prevent students falling victim to CSE by:

- Educating pupils from Year 7 about healthy relationships.
- In Year 8 - 11 the PSHE curriculum will focus on supporting our pupils to recognise risk and to manage their own behaviour around risk.
- The curriculum will also allow student to reflect on what an unhealthy relationship would look like and how to find support if in that situation.
- The objectives of this curriculum structure will be to help students understand: respect and responsibilities within any relationship.
- How to stay safe.
- An understanding of what to do and who to discuss issues with.
- An awareness of unhealthy relationships, sexual exploitation and grooming.
- An understanding of dangerous and exploitative situations.
- An opportunity to explore gender stereotypes and gender roles.
- An increased awareness of risk, assessing risk and the consequences of risk taking, including sexual bullying and peer pressure.
- An opportunity to build skills and confidence in developing positive, healthy relationships.

The Designated Safeguarding Lead will ensure that staff are aware of CSE and the part that they play in helping to keep our students safe by: Accessing training, multi-agency briefings on CSE and any new guidance.

The DSL will take responsibility for:

- Briefing staff routinely on how to spot the signs that a child may be victim of or at risk of CSE. Directing materials to all staff through briefings at whole school inset days.
- Advising staff that for any concern about a child to direct their concern to the Designated Safeguarding Lead.

The Designated Safeguarding Lead will ensure that processes for referral to ensure that help is secured for the pupil are robust by:

- Training Pastoral Staff on the completion of the CSE screening tool.
- Allowing time for completion and discussion when completing the screening tool.

- Allocate a mentor to support pupils believed to be at risk.
- To monitor the pupil and where there are significant concerns identified to refer through to the local authority Contextual Safeguarding Operational Group (CSOG) that is held three times per month for low, medium and high risk cases.
- To provide time and supervision for pastoral staff working with children victim of or at high risk of CSE.
- The Designated Safeguarding lead supported by the Pastoral staff will ensure that Parents are aware of the issue of CSE by:
 - Advice on the school web site on who to contact in school with Safeguarding concerns
 - Key Worker support for the family of children involved or at risk.
 - Creates strong links with organisations that work with young people who are vulnerable to CSE and going missing from home such as “We are with you” and Cheshire Police.

All Staff

All Staff have a responsibility to be aware of the signs of CSE and alert the Designated Safeguarding Lead and/ or Pastoral Staff. Report any concerns about the safety of a child under the legislation behind the Child Protection Policy.

Signs which may indicate CSE

The individual factors may not mean anything in themselves and you may already know that the right staff are aware of the pupil’s situation and working with them. However, we should always remember that it is never wrong to pass something on no matter how small it may seem. All Staff should be aware of this list and inform a member of the Pastoral Team or Designated Safeguarding Lead if they become aware of the following:

- Chaotic Home
- **Poor and unauthorised attendance – Key sign to look out for when working in education.**
- Early Sexualised Behaviour
- Family Mental Health
- Historic Abuse
- Bereavement
- Friend of CSE victim
- Learning difficulties
- Unsure of sexual orientation
- Homeless or moving between homes
- Older or younger friends
- In Care
- Low Self Esteem
- Missing or Runaway
- Physical injuries
- Substance Abuse
- Sexually Transmitted Diseases
- Estranged from family
- Changes in Appearance such as make up hairstyle
- Bringing new phones, gifts, clothes into school
- Sexually bullied
- Self-Harm
- Attempted Suicide
- Secret Calls
- Poor E-Safety history
- Older boyfriend/girlfriend

What is Child Criminal Exploitation?

Child criminal exploitation is increasingly used to describe this type of exploitation where children are involved. Child Criminal Exploitation is common in county lines and occurs where an individual or group takes advantage of an imbalance of power to coerce, control, manipulate or deceive a child or young person under the age of 18. The victim may have been criminally exploited even if the activity appears consensual. Child Criminal Exploitation does not always involve physical contact; it can also occur through the use of technology. Criminal exploitation of children is broader than just county lines, and includes for instance children forced to work on cannabis farms or to commit theft.

Serious Crime

Specific guidance has been added to support schools in recognising where pupils may be at risk from serious crime.

The guidance sets out what school and college staff should look out for:

- “All staff at Penketh high School are aware of indicators, which may signal that children are at risk from, or are involved with serious violent crime. These may include increased absence from school, a change in friendships or relationships with older individuals or groups, a significant decline in performance, signs of self-harm or a significant change in well-being, or signs of assault or unexplained injuries. Unexplained gifts or new possessions could also indicate that children have been approached by, or are involved with individuals associated with criminal networks or gangs” (DfE, 2019a)
- “All staff should be aware of the associated risks and understand the measures in place to measure these. Advice for schools and colleges is provided in the Home Office’s Preventing youth violence and gang involvement and its criminal exploitation of children and vulnerable adults: county lines guidance.” (DfE, 2019a)

Please see the policy for further information:

https://assets.publishing.service.gov.uk/government/uploads/system/uploads/attachment_data/file/741194/HOCountyLinesGuidanceSept2018.pdf

7. Sexually harmful behaviour/sexual abuse e.g. (inappropriate sexual language, touching, sexual assault etc.)

Harmful sexual behaviour involves one or more children engaging in sexual discussions or acts that are inappropriate for their age or stage of development. These can range from using sexually explicit words and phrases to full penetrative sex with other children or adults (Rich; 2011).

Sexually harmful behaviour occurs when a young person (below the age of eighteen years) engages in any form of sexual activity with another individual over whom they have power by virtue of age, emotional maturity, gender, physical strength or intellect and where the victim in this relationship suffers sexual exploitation and betrayal of trust.

Sexual activity includes sexual intercourse (oral, anal or vaginal), sexual touching, exposure of sexual organs, showing pornographic material, exhibitionism, voyeurism, obscene communication, sharing of nude and semi-nude images and / or videos, frottage, fetishism and talking in a sexualised way. We

should also include any form of sexual activity with an animal and where a young person sexually abuses an adult.

Incidents of sexually harmful behaviour come to light, either through discovery or disclosure, which may be third-party or second-hand information. The details provided should be carefully recorded by the person receiving the initial account on Initial Concern Form (Appendix 1) and passed to the DSL. The DSL will assess the level of concerns about the behaviour if a referral to Social Care is appropriate. Sexually harmful behaviour from young people is not always contrived or with the intent to harm others. Sexually harmful behaviour may range from inappropriate sexual language, inappropriate role play, sexually touching another or sexual assault/abuse. Decisions on whether sexualised behaviour is potentially harmful should be made with reference to the NSPCC framework and the Brook Traffic Light tool: <https://www.brook.org.uk/our-work/the-sexual-behaviours-traffic-light-tool>.

Up skirting

All staff at Penketh High School are aware that ‘up skirting’ is now a criminal offence. A definition has been included which describes up skirting as, “taking a picture under a person’s clothing without them knowing, with the intention of viewing their genitals or buttocks to obtain sexual gratification, or cause the victim humiliation, distress or alarm” (DfE, 2019a).

8. Peer on Peer Abuse

Since March 2013, the Home Office definition of domestic violence now includes 16 – 18 year olds. Penketh High School has a zero tolerance approach to peer on peer abuse and recognize that it should never be passed off as “banter”, “Just having a laugh” and “boys will be boys” as this can lead to a culture of unacceptable behaviours and an unsafe environment for children. However, this type of abuse can occur in any relationship. Peer on Peer abuse may include the following features:

Emotional Abuse	Physical Abuse	Sexual Abuse	Financial Abuse
<p>Constant insults and name calling; Isolation from friends and family;</p> <p>Checking up on partners all the time (Inc. checking emails, texts, social networking sites etc.)</p> <p>Making the person feel responsible for the abuse;</p> <p>Controlling what someone wears or where they go</p>	<p>Hitting, punching, pushing, biting, kicking, using weapons etc.</p>	<p>Forcing someone to have sex</p> <p>Unwanted kissing or touching</p> <p>Being made to watch pornography without consent</p> <p>Pressure not to use contraception</p>	<p>Taking/controlling money</p> <p>Forcing people to buy them things</p> <p>Forcing partners to work or not to work</p>

Warning Signs of Peer on Peer Abuse might include:

- Physical signs of injury / illness

- Truancy, failing grades
- Withdrawal, passivity, being compliant
- Changes in mood and personality
- Isolation from family and friends
- Frequent texts and calls from boyfriend / girlfriend
- Inappropriate sexual behaviour /language / attitudes
- Depression
- Pregnancy
- Use of drugs / alcohol (where there was no prior use)
- Self-harm
- Eating disorders or problems sleeping
- Symptoms of post-traumatic stress
- Bullying / being bullied

Signs of Peer on Peer Abuse to look out for:

- Being late for school / not attending (especially if abuser attends same school)
- Arriving early / staying late to avoid abuser
- Not focused in lessons as s/he is preoccupied and worried
- Very gendered expectations of career and achievement
- Feeling unsafe as afraid of being traced by abuser via school
- Disturbed sleep affecting concentration
- Appearing isolated and removed
- Worried that everyone at school knows what is happening

Practice Reminder: The action that ALL staff and volunteers should take, if there are concerns about a child is to follow the procedure written in this policy, which is to pass the concerns to the DSL or Safeguarding staff and then complete a written report via CPOMS or email safeguarding@penkethhigh.org if there is no access to CPOMS.

At Penketh high school we follow the government guidance around sexualised behaviour at all levels of risk and take advice from statutory agencies if we feel there is a concern around any type of sexualised behaviour, we recognise that issues associated with disability, ethnicity, gender, and sexual orientation may make it more difficult for children to report abuse. We recognise the gendered nature of peer on peer abuse (i.e. that it is more likely that girls will be victims and boys will be perpetrators), but that all peer on peer abuse is unacceptable and will be taken seriously as per our zero tolerance approach to abuse.

Key document Sexual Violence and Sexual Harassment between children in schools and colleges can be used to provide further direction as mentioned in Keeping Children Safe in Education 2021: https://assets.publishing.service.gov.uk/government/uploads/system/uploads/attachment_data/file/719902/Sexual_violence_and_sexual_harassment_between_children_in_schools_and_colleges.pdf

Domestic Violence and Abuse

Additional information can be found at: <https://www.gov.uk/domestic-violence-and-abuse>

Support for the young person who has been harmed

What support they require depends on the individual young person. It may be that they wish to seek counselling or one to one support via a mentor. It may also be that they feel able to deal with the

incident(s) on their own or with support of family and friends, in which case it is necessary that this young person continues to be monitored and offered support should they require it in the future. If the incidents are of a bullying nature, the young person may need support in improving peer groups/relationships with other young people or some restorative justice work with all those involved may be required

Other interventions that could be considered may target a whole class or year group for example a speaker on cyber bullying, relationship abuse etc. It may be that through the continued curriculum of PSHE that certain issues can be discussed and debated more frequently.

If the young person feels particularly vulnerable it may be that a risk assessment can be put in place for them whilst in school so that they have someone named that they can talk to, support strategies for managing future issues and identified services to offer additional support.

Support for the young person who has displayed harmful behaviour

In this circumstance, it is important to find out why the young person has behaved in such a way. It may be that the young person is experiencing their own difficulties and may even have been harmed themselves in a similar way. In such cases support such as one to one mentoring or counselling may also be necessary. Particular support from identified services may be necessary through a strengthening families/early help referral and the young person may require additional support from family members.

Once the support required to meet the individual needs of the young person has been met, it is important that young person receives a consequence for their behaviour. This may be in the form of restorative justice e.g. making amends with the young person they have targeted if this has been some form of bullying. In the cases of sexually harmful behaviour it may be a requirement for the young person to engage in one to one work with a particular service or agency (if a crime has been committed this may be through the police or youth offending service).

If there is any form of criminal investigation ongoing it may be that this young person cannot be educated on site until the investigation has concluded. In which case, the young person will need to be provided with appropriate support and education whilst off site. Even following the conclusion of any investigation the behaviour that the young person has displayed may continue to pose a risk to others in which case an individual risk assessment may be required. This should be completed via a multi-agency response to ensure that the needs of the young person and the risks towards others are measured by all of those agencies involved including the young person and their parents. This may mean additional supervision of the young person or protective strategies if the young person feels at risk of engaging in further inappropriate or harmful behaviour.

The school may also choose a punishment as a consequence such as exclusion or internal exclusion/inclusion/seclusion for a period of time to allow the young person to reflect on their behaviour.

After care and support for the pupils involved

It is important that following the incident the young people involved continue to feel supported and receive help even if they have stated that they are managing the incident. Sometimes the feelings of remorse, regret or unhappiness may occur at a much later stage than the incident. It is important to ensure that the young people do not engage in any further harmful behaviour either towards someone else or to themselves as a way of coping (e.g. self-harm). In which case, regular reviews with the young people following the incident(s) are imperative.

Preventative Strategies for Schools and Settings

For all schools and settings, it is important to develop appropriate strategies in order to prevent the issue of peer on peer abuse rather than manage the issues in a reactive way.

Firstly, and most importantly for schools and settings is recognition that peer on peer abuse can and will occur on any site even with the most stringent of policies and support mechanisms. In which case it is important to continue to recognise and manage such risks and learn how to improve and move forward with strategies in supporting young people to talk about any issues and through sharing information with all staff.

This can be supported by ensuring that each school/setting has an open environment where young people feel safe to share information about anything that is upsetting or worrying them. This can be strengthened through a strong and positive PSHE curriculum that tackles such issues as prejudiced behaviour and gives children an open forum to talk things through rather than seek one on one opportunity to be harmful to one another.

To enable such an open and honest environment it is necessary to ensure the whole workforce feels confident and enabled to talk about issues and challenge perceptions of young people including use of inappropriate language and behaviour towards one another.

In order to create such an environment, it is necessary for whole staff training and CPD around abusive behaviours and talking to young people in a way that continues to create an open and honest environment without prejudice. It is incredibly important that staff do not dismiss issues as 'banter' or 'growing up' or compare those to their own experiences of childhood. It is necessary that staff consider each issue and each individual in their own right before taking action. If staff minimise the concerns raised it may result in a young person seeking no further help or advice. It is important that signposting is available to young people in the event that they don't feel confident raising an issue to staff or a peer. It is useful to have a resource board with support services on a wide range of issues so young people can seek their own solutions should they wish to. In the same way external services or support programmes could be brought in to talk to young people about specific issues in support of the prevention of peer on peer abuse.

Finally, it is useful to ensure young people are part of changing their circumstances and that of the procedures within schools. Having pupil voice and encouraging young people to support changes and develop 'rules of acceptable behaviour' will go far in helping to create a positive ethos in school and one where all young people understand the boundaries of behaviour before it becomes abusive.

9. Sexting

Sexting is when someone sends or receives a sexually explicit text, image or video on their mobile phone, usually in a text message. When people talk about sexting, they usually refer to sending and receiving:

- Naked pictures or 'nudes' / semi-nudes
- Underwear shots
- Sexual pictures
- Explicit text messages or videos.

If pupils are 'sexting' indecent images of someone under the age of 18, they may be committing a criminal offence under Section 1 of the Protection of Children Act 1978 and Section 160 Criminal Justice Act 1988. This means, it is a crime to:

- Take an indecent photograph or allow an indecent photograph to be taken;
- To make an indecent photograph (and this includes downloading or opening an image that has been sent);
- To distribute or show such an image;
- To possess with the intention of distributing images;
- To possess such images.

Whether someone is charged is decided by the Crown Prosecution Service. Generally, children are not prosecuted. However, children and young people need to be aware that they may be breaking the law. Although unlikely to be prosecuted, children and young people who send or possess the images may be visited by Police and on some occasions media equipment e.g. computers and mobile phones could be removed.

The key factor to highlight is that the real harm in relation to 'sexting' is that those in the photographs may become victims should the images be shown to others.

Further information can be found in the Appendices with also link to Child Exploitation Online Protection Service. (CEOPS)

Practice Reminder: The action that ALL staff and volunteers should take, if there are concerns about a child is to follow the procedure written in this policy, which is to pass the concerns to the DSL or a member of the Safeguarding Team and then complete a written report via CPOMS or email safeguarding@penkethhigh.org if there is no access to CPOMS.

10. Types of Bullying

Bullying (physical, name calling, homophobic etc.)

Bullying is unwanted, aggressive behaviour among school aged children that involves a real or perceived power imbalance. The behaviour is repeated, or has the potential to be repeated, over time. Both young people who are bullied and who bully others may have serious, lasting problems.

In order to be considered bullying, the behaviour must be aggressive and include: An Imbalance of Power: Young people who bully use their power—such as physical strength, access to embarrassing information, or popularity—to control or harm others. Power imbalances can change over time and in different situations, even if they involve the same people.

Repetition: Bullying behaviours happen more than once or have the potential to happen more than once. Bullying includes actions such as making threats, spreading rumours, attacking someone physically or verbally or for a particular reason e.g. size, hair colour, gender, sexual orientation, and excluding someone from a group on purpose.

Physical abuse e.g. (biting, hitting, kicking, hair pulling etc.)

Physical abuse may include, hitting, kicking, nipping, shaking, biting, hair pulling, or otherwise causing physical harm to another person. There may be many reasons why a child physically harms another

and it is important to understand why a young person has engaged in such behaviour (including whether it has happened accidentally) before considering the action or punishment to be undertaken.

Prejudiced Behaviour

The term prejudice-related bullying refers to a range of hurtful behaviour, (physical, emotional or both) which causes someone to feel powerless, worthless, excluded or marginalised, and which is connected with prejudices around belonging, identity and equality in wider society. In particular, prejudices are to do with disabilities and special educational needs, ethnicity, cultural and religious backgrounds, gender, home life and sexual identity (homosexual, bisexual and transsexual).

Cyber Bullying

Cyberbullying includes the use of phones and computers/devices and it can include: instant messaging, e-mail, chat rooms or social networking sites such as Facebook and Twitter to harass threaten or intimidate someone it may constitute a criminal offence under the Sexual Offences Act 2003.

Outside of the immediate support young people may require in these instances, the school may have no choice but to involve the police to investigate these situations. In cases of sexting the following guidelines should be consulted:

https://www.gov.uk/government/uploads/system/uploads/attachment_data/file/551575/6.2439_K_G_NCA_Sexting_in_Schools_WEB_1_PDF

Initiation/Hazing

Hazing is a form of initiation ceremony which is used to induct newcomers into an organisation such as a private school, sports team etc. There are a number of different forms, from relatively mild rituals to severe and sometimes violent ceremonies.

The idea behind this practice is that it welcomes newcomers by subjecting them to a series of trials which promote a bond between them. After the hazing is over, the newcomers also have something in common with older members of the organisation, because they all experienced it as part of a rite of passage. Many rituals involve humiliation, embarrassment, abuse, and harassment.

Additional information on bullying can be found a

<https://www.gov.uk/government/publications/preventing-and-tackling-bullying>

You will find the following useful publications:

- **Preventing and tackling bullying** REF: DFE-00292-2013
- **Supporting Children and young people who are bullied: advice for schools** REF:DFE-00094-2014
- **Cyberbullying: Advice for Head teachers and school staff** REF:DFE-00652-2014

11. Substance Misuse

Pupils affected by their own or other's drug misuse should have early access to support through the school's 'early help' offer and through referral to local drug and alcohol services.

As part of the statutory duty on schools to promote pupils' wellbeing, schools have a clear role to play in preventing drug misuse as part of their pastoral responsibilities. Schools can have a key role in identifying pupils at risk of drug or alcohol misuse. The process of identifying needs should aim to

distinguish between pupils who require general information and education, those who could benefit from targeted prevention, and those who require a detailed needs assessment and more intensive support.

- Schools should provide accurate information on drugs and alcohol through education and targeted information, including via the [FRANK](#) service;
- Tackle problem behaviour in schools, with wider powers of search and confiscation;
- Work with local voluntary organisations, health partners, the police and others to prevent drug or alcohol misuse.
- To include this support for children as part of the 'early help' offer from the school.

12. Modern Slavery

Modern slavery encompasses slavery, servitude, forced and compulsory labour and human trafficking. Traffickers and slave drivers coerce, deceive and force individuals against their will into a life of abuse, servitude and inhumane treatment. A large number of active organised crime groups are involved in modern slavery. But it is also committed by individual opportunistic perpetrators.

Some key definitions of modern slavery include:

- **Slavery is:** 'the status or condition of a person over whom any or all of the powers attaching to the right of **ownership** are exercised'. (Convention to Suppress the Slave Trade and Slavery 1926)
- **Forced or Compulsory Labour is:** 'all work or service which is exacted from any person under the menace of any penalty and for which the said person has not offered himself voluntarily' (*Convention Concerning Forced or Compulsory Labour, 1930 (No.29)*)
- **Labour** is the provision of any service, not just manual labour.
- **Servitude is:** 'an obligation to provide a service that is imposed by the use of coercion'.
- **Human Trafficking is:** Although many people think of human trafficking as only affecting adults it affects children as well. Child trafficking is child abuse. Children are recruited, moved or transported and then exploited, forced to work or sold. They are often subject to multiple forms of exploitation.
- It is also not just about trafficking adults and children across national borders, human trafficking can take place anywhere. The trafficking of human beings involves the movement of a person from one place to another for the purpose of exploiting them using deception, coercion, the abuse of power or the abuse of someone's vulnerability. People can be trafficked in order to exploit them for sexual purposes, forced labour, domestic servitude or organ harvesting.

At Penketh high school we have close links with professionals who are experts in this area and all concerns around trafficking and modern slavery follow the same process as any other safeguarding issue in school.

13. Cybercrime

Cybercrime is defined as criminal activity committed using computers and/or the internet. This includes activities such as hacking, 'denial of service' attacks (where a website is made available), and creating and using malware such as viruses. Children who are particularly skilled in computing and technology may be drawn into cybercrime-either deliberately or inadvertently.

14. Child Abduction and Community Safety Incidents

- Child abduction is when children are taken from their parents or carers without permission. It can be committed by parents or other family members, by people known but not related to the child (like neighbors, friends, acquaintances) and by strangers.
- Community safety incidents are things like unknown adults loitering near school or trying to talk to children. When a school is made aware of this the DSL will liaise with the local Police to decide on appropriate actions.
- Always follow our pick-up procedures to make sure that children go home safely with their designated adult(s)
- If you see anything suspicious that doesn't feel right, report it immediately.

15. Allegations regarding Person(s) Working in or on behalf of School (including Volunteers and Supply staff)

Where an allegation is made against any person working in or on behalf of the school, including volunteers and supply staff, the Principal will refer to the procedure outlined in the TCAT Safeguarding Policy.

Part 6: Key Documents and Links

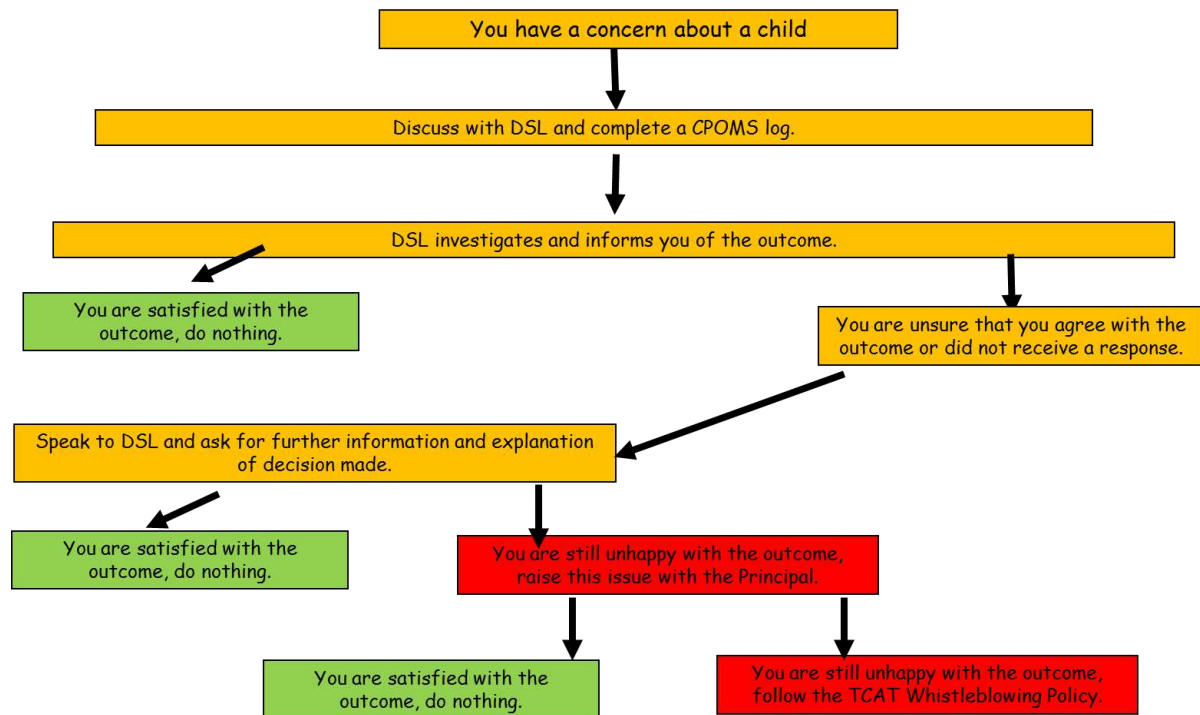
All staff must read **Keeping Children Safe in Education (2021)**

https://assets.publishing.service.gov.uk/government/uploads/system/uploads/attachment_data/file/912593/Keeping_children_safe_in_education_part_1_Sep_2021.pdf

Version	Date	Action
1	July 2017	Policy Ratified by Governors (SPT owned)
	July 2019	Ratified by Governors
2	November 2020	Policy Ratified by Governors (SB owned)
3	August 2021	Updated to reflect KCSIE 2021

Appendix 1: Safeguarding Flow Chart

What to do when you raise a concern with your DSL but you are unsure of the response?



Appendix 2: Safeguarding and Early Help Procedure Flow Chart

